

# PARTICIPANT GUIDE



# WELCOME TO BIKE SHOW VIC-OSONA 2023

Vic will be the capital of cycling with a festival full of sports activities aimed at all bicycle lovers. MTB, Gravel, E-Bikes and children's races in an extensive program where everyone will find their proposal, challenge or activity that will allow them to discover and rediscover a privileged territory of exuberant nature and dream landscapes. We are waiting for you!



# PROGRAM

**Friday May 26**

4:00 p.m. to 7:00 p.m. Opening of race office for bib collection

**Saturday May 27**

7:30 a.m. Race office opening for bib collection

09.00 Start SCOTT MARATHON (LONG)

09.05 Start SCOTT MARATHON (SHORT)

09.10 Departure TURONET (POPULAR)

09.30 GRAVEL departure

09.40 E-BIKE departure

10.00 Start of the Children's Catalunya Cup

12.30 SCOTT MARATHON awards ceremony

13.00 Children's Cup Catalunya awards ceremony

## CCI PROGRAM

2.00 pm Departure CCI categories: Cadet (M and F), Junior and Master 30 and 40 (F), Master 40, 50 and 60 (M)

3.45pm CCI departure categories: Elite and Sub.23 (F), Junior and Master 30 (M)

5.30pm CCI departure categories: Elite and Sub.23 (M)







19.00 CCI awards ceremony







# Map Village

- 1  
- 2  
- 1  



# 5 modalities

5 different audiences

XCM



COMPETICIÓN  
PRO  
OPEN  
**POPULAR**



COPA CATALUNYA  
INFANTIL

GRAVEL



E-BIKE



XCO







The region of Osona and its capital, Vic, are strategically located halfway between the Pyrenees and the Costa Brava. Thanks to the landscape typical of inland Catalonia and this unique location, the region offers a wide range of attractive tracks for GRAVEL practice.

At the GRAVEL RIDE VIC we have prepared the most impressive places in Osona: the Plana de Vic and the Ter surrounded by mountains; territories of suggestive numbers to discover such as Gesabisaura, Collsacabra, Savassona, Las Guilleris, Montseny and Lluçanès.

You can choose between an 80 KM route and another of 120 KM. A journey through time where you can discover the secrets of history and art on a bicycle, looking for new experiences!

Emergency number: 638 60 27 77







# 80K

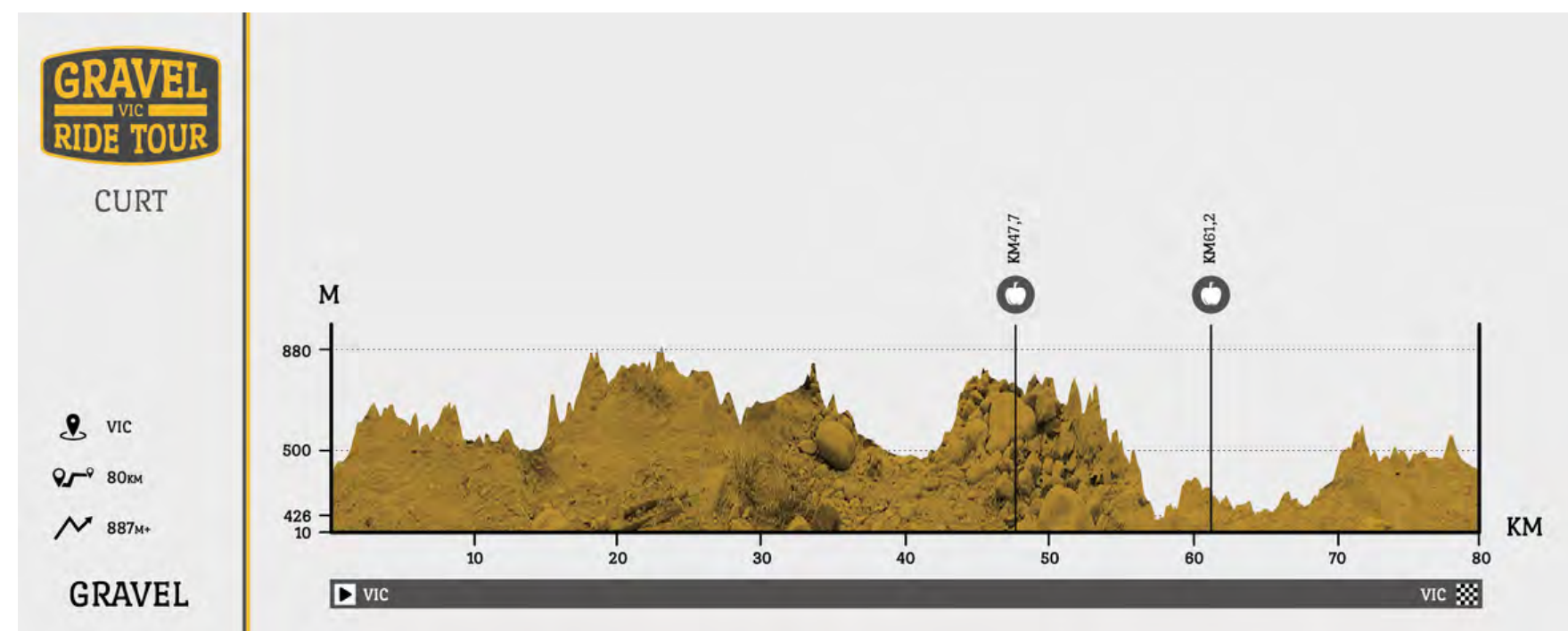


### TRACK:

80 Km i 887 M+

Avituallamientos:

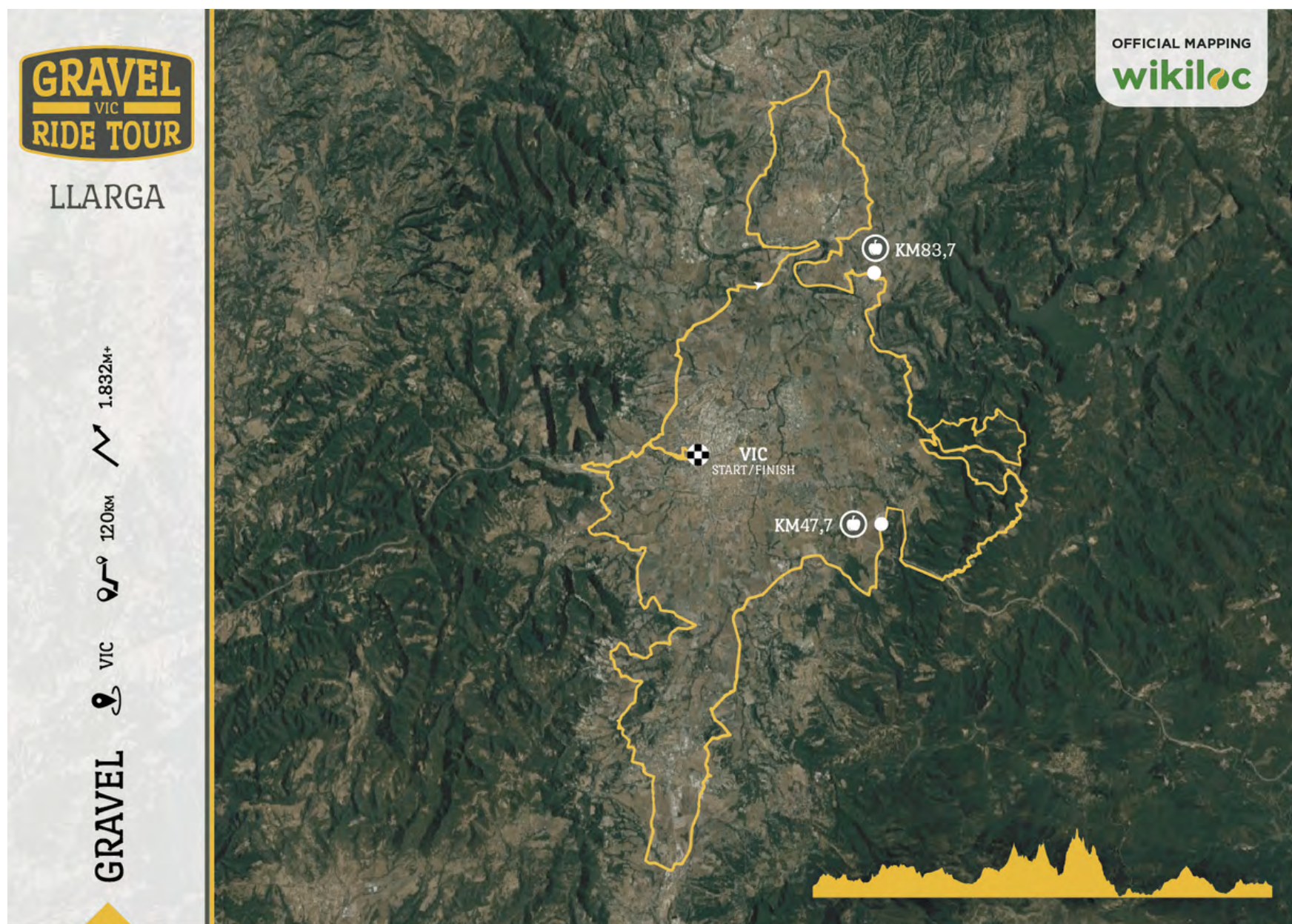
- AV1 KM 47,7
- AV2 KM 61,2







# 120K

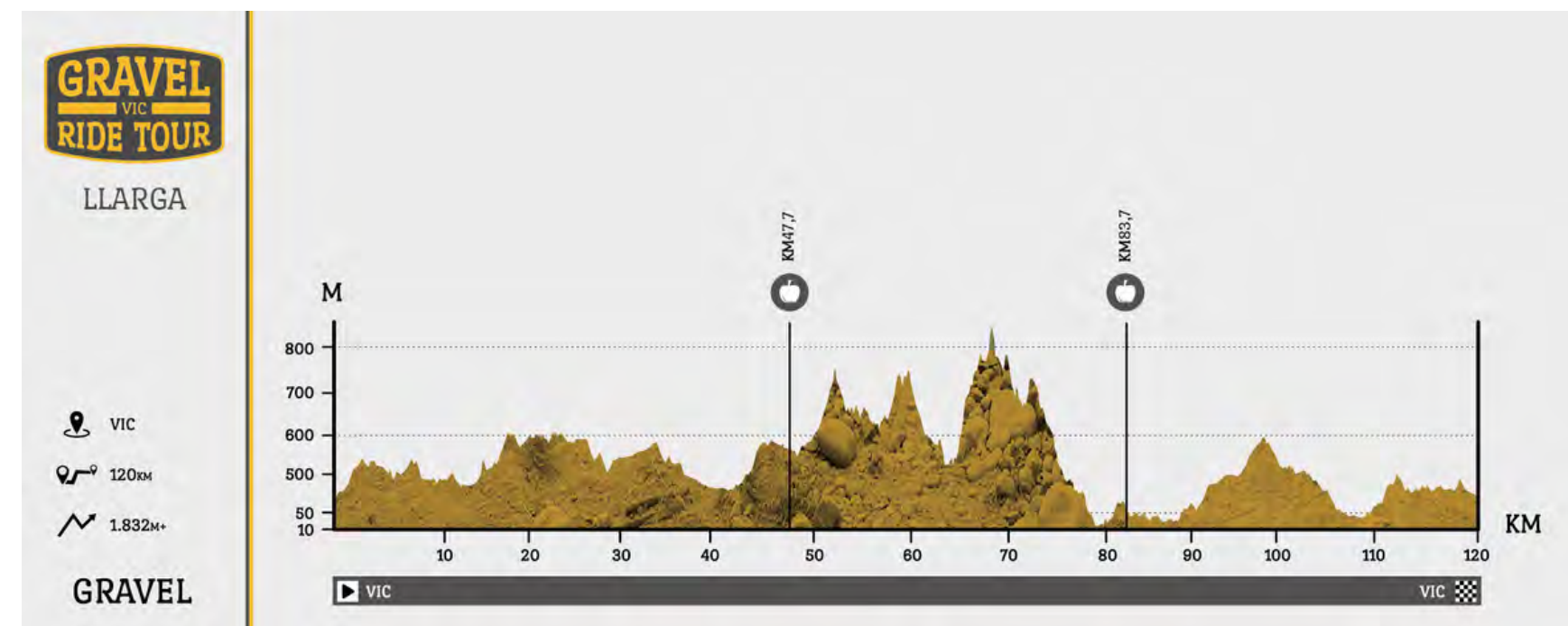


## TRACK:

120 Km i 1832 M+

Avituallamentos:

- AV1 KM 47,7
- AV2 KM 83,7





# E-BIKE

E-Bike Vic consists of a technical route of 47km and 930m of positive gradient, with a first part of the track and a section of secondary road, and from San Bartomeu del Grado begins the more technical part but without special difficulty because ridges with views of the Plana de Vic.

There will also be a basic route of 40km and 650m of positive gradient, also by track up to Santa Cecília de Voltregà where we will find refreshments, and share a turn along the ridges with views of the Plana de Vic, and a last stretch next to the Ter River to arrive at the sports area of Vic.

This test includes the following supplies:

There will be refreshments in Santa Cecília de Voltregà km 21 for the technical and 15 for the basic.

There will also be a water point in Manlleu towards km 35 of the technical track and km 30 of the basic track.

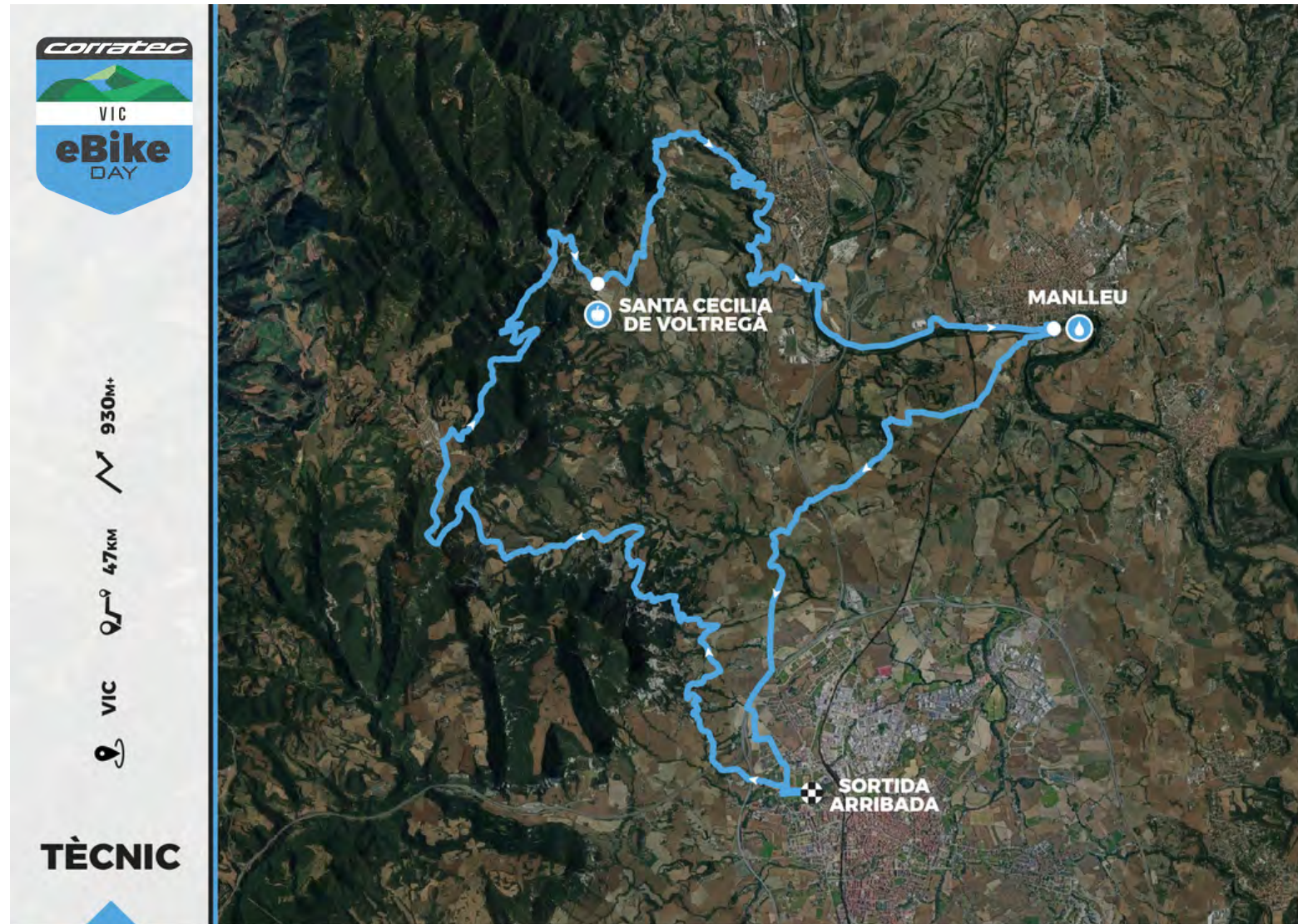
At the arrival they will have the participant's bag with a plate of paella.

Emergency number: 638 60 27 77





# TÈCNIC



Descarrega



# BÀSIC



Descarrega







## **PARTICIPANT SERVICE**

- Cloakroom service
- Shower service
- Foodtracks
- Nutrisport in arrivals
- Paella for Marathon, Gravel and E-Bike participants.



